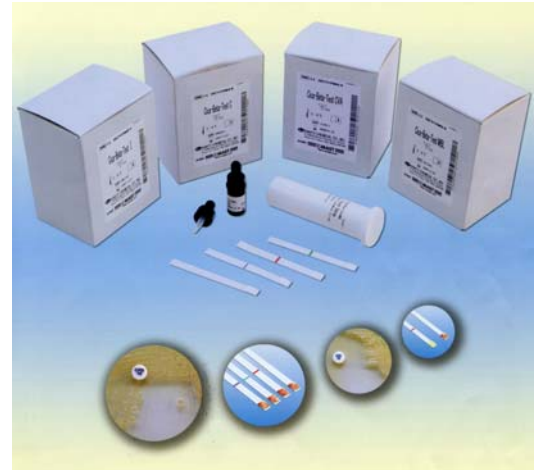




CICA-BETA-TEST Rapid ESBL(Extended Spectrum Beta Lactamases)

抗药性细菌测试

- Rapid – ESBLs, MBLs and AmpCs may be detected from non-selective plates in a maximum of 15 minutes.
- Easy to use – Substrate solution is applied to the filter pad and suspect colonies from freshly incubated plates are streaked onto the strip.
- Specific end point – Colour change from yellow to red.
- User friendly – Colour-coded bar within the strip for easy test identification.



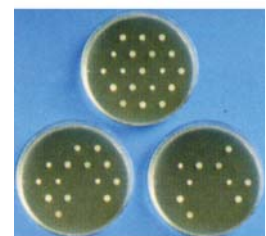
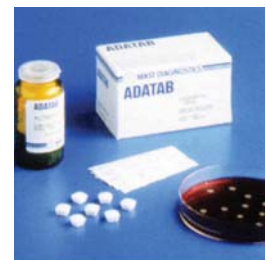
Model	Description
D62C	MAST ESBL disc, 6x50/pk, in cartridge, Cefotaxime 30 & Cefotaxime/Clavulanic Acid 30/10. code no. D62C, England.
D64C	MAST ESBL disc, 6x50/pk, in cartridge, Ceftazidime 30 & Ceftazidime/Clavulanic Acid 30/10. code no. D64C, England.

ADATAB™ 冻干抗生素片 – 适用于简便的多点技术琼脂稀释法药敏性测试

MAST ADATAB™ is a lyophilised tablet for the convenient preparation of antibiotic containing plates used in breakpoint or MIC (minimum inhibitory concentration) testing.

The ADATAB™ system is centred around the convenience, speed and economy of multipoint technology, where numerous isolates can be simultaneously inoculated onto test plates using MAST Multipoint Inoculators.

- Reproducible, accurate and easy to interpret.
- Highly suited to economical multipoint inoculation.
- Control organisms can be included on the same plate for enhanced confidence.
- 2 year shelf life for most antibiotics.
- No weighing or dilution required.
- Can be readily combined with the MAST-IDA system for identification of Enterobacteriaceae.



Each ADATAB™ tablet contains a measured dose of antibiotic designed to effect a specific breakpoint concentration in 100ml of medium

Culture Media 培养基 – 特别配制的培养基，适合标准化的药敏性测试程序

As a specialist microbiology company, MAST has an extensive range of Dehydrated Culture Media and selective supplements for the culture, examination, selection, isolation and transport of clinically significant organisms from patient specimens.

In addition, media are also available for the food, industrial and research markets.

- Extensive range of culture media.
- Separate range of raw materials - agars, peptones, bile salts.
- Available as complete pre-formulated mixes or medium base plus supplement.
- Pack sizes to suit all throughput requirements.
- Can be supplemented with Selectataba or Selectaviala for selective isolation or enrichment.
- Custom requirements easily accommodated
- 500g tubs and 5kg containers are available as standard
- MAST REDIPAC 10x200ml, 10x500ml, 10x1litre pre-weighed packs are available in sachets for selected media

