

Libra S35 and Libra S35PC UV/Visible Spectrophotometers

- Press To Read (PTR) technology extends the life of light source
- GLP self test diagnostics
- Fully Pharmacopoeia compliant
- Rapid scan facility
- 8-position sample changer as standard
- **Libra S35** with large graphic LCD display
- **Libra S35** with on-board software and able to stored 50 methods
- **Libra S35PC** is PC controlled and supply with *Acquire* software



Libra S35

Specification		
Model	Libra S35	Libra S35PC
Light Source	Deuterium / Tungsten (PTR)	
Optics	Reference beam compensation (RBC)	
Bandwidth	1.0nm or better	
Wavelength Range	190 - 1100nm (in 0.1nm steps)	
Wavelength Accuracy	+-0.5nm	
Scanning Speed	Max. 7300nm/min	
Absorbance Range	-3.000 to +3.000A	
Dimensions	510 x 350 x 160mm	



Biochrom Ltd
Certificate No. B90333

Libra S32 and Libra S32PC UV/Visible Spectrophotometers

- Press To Read (PTR) technology extends the life of light source
- GLP self test diagnostics
- Rapid scan facility
- 8-position sample changer as standard
- **Libra S32** with large graphic LCD display
- **Libra S32** with on-board software and able to stored 50 methods
- **Libra S32PC** is PC controlled and supply with *Acquire* software

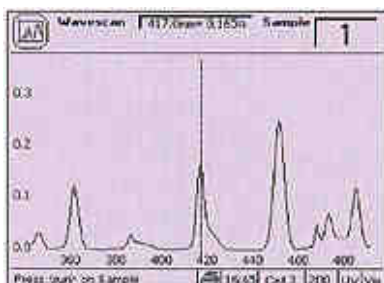


Libra S32

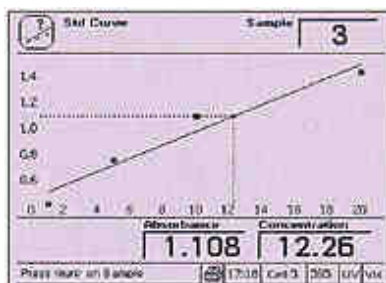
Specification		
Model	Libra S32	Libra S32PC
Light Source	Deuterium / Tungsten (PTR)	
Optics	Reference beam compensation (RBC)	
Bandwidth	1.8nm or better	
Wavelength Range	190 - 1100nm (in 0.1nm steps)	
Wavelength Accuracy	+-0.7nm	
Scanning Speed	Max. 7300nm/min	
Absorbance Range	-3.000 to +3.000A	
Dimensions	510 x 350 x 160mm	



Libra S32PC (PC and LCD not included)



Standard Curve



Wavelength Scan



Biochrom Ltd
Certificate No. B90333



香港科學儀器社有限公司
Che Scientific Co. (Hong Kong) Ltd.

Hong Kong Head office:

Unit D, 18/F, Roxy Industrial Centre, 58-66 Tai Lin Pai Road, Kwai Chung, Hong Kong

TEL: (852) 2481 1323 FAX: (852) 2418 1302

E-mail: sales@chescientific.com Website: www.chescientific.com



浙江科通仪器有限公司
Zhejiang Fortune Scientific Co. Ltd.

TEL: (86 571) 8729 7500 FAX: (86 571) 8729 7511

E-mail: sales@fortunescientific.com.cn

Website: www.fortunescientific.com.cn

Guangzhou Branch:

TEL: (86 20) 8130 7388 FAX: (86 20) 8108 4925

E-mail: guangzhou@fortunescientific.com.cn

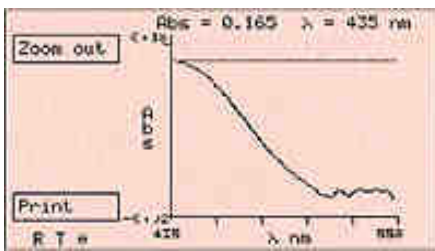
Libra S11 and Libra S12 Visible, UV/Visible Spectrophotometers

- Lamp saver mode
- Automatic system calibration
- Wide range of sample handling accessories

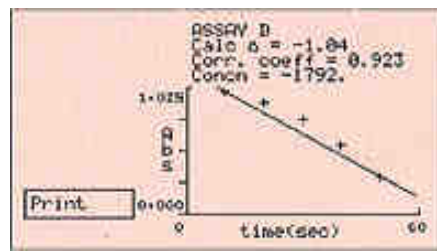


Libra S12

Specification		
Model	Libra S11	Libra S12
Light Source	Tungsten	Deuterium / Tungsten
Optics	Single beam	
Bandwidth	5nm	
Wavelength Range	325 - 999nm	200 - 999nm
Wavelength Accuracy	+2nm	
Absorbance Range	-3.000 to +3.000A	
Dimensions	300 x 400 x 190mm	
Power	90 - 265 V AC, 50/60Hz	



Wavelength Scan



Kinetics Assay



Libra S6 and Libra S6H Visible Spectrophotometers

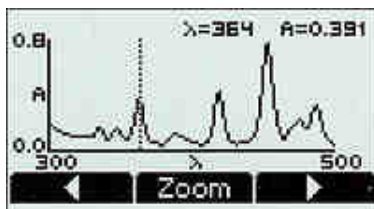
- "Flash Scan" diode array
- Comprehensive 99 method storage, simple menu drive software
- Highly portable, just 2kg



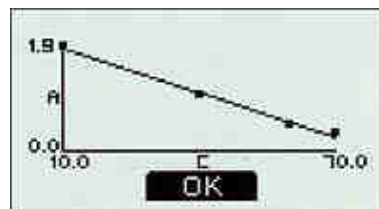
Libra S6

Specification		
Model	Libra S6	Libra S6H *
Light Source	Tungsten	
Optics	Diode array	
Bandwidth	7nm or better	
Wavelength Range	330 - 800nm	
Wavelength Accuracy	+2nm	
Absorbance Range	-0.3 to 2.5A	
Dimensions	270 x 400 x 200mm	
Power	90 - 265 V AC, 50/60Hz	

* Libra S6H with heated cell holder for thermostatted measurements at 37°C



Wavelength Scan



Standard Curve



香港科學儀器社有限公司
Che Scientific Co. (Hong Kong) Ltd.

Hong Kong Head office:

Unit D, 18/F, Roxy Industrial Centre, 58-66 Tai Lin Pai Road, Kwai Chung, Hong Kong

TEL: (852) 2481 1323 FAX: (852) 2418 1302

E-mail: sales@chescientific.com Website: www.chescientific.com



浙江科通儀器有限公司
Zhejiang Fortune Scientific Co. Ltd.

TEL: (86 571) 8729 7500 FAX: (86 571) 8729 7511

E-mail: sales@fortunescientific.com.cn

Website: www.fortunescientific.com.cn

Guangzhou Branch:

TEL: (86 20) 8130 7388 FAX: (86 20) 8108 4925

E-mail: guangzhou@fortunescientific.com.cn

Libra S21 and Libra S22 Visible, UV/Visible Spectrophotometers

- Press To Read (PTR) xenon lamp technology
- Reference Beam Compensation (RBC)
- Instrument Performance Validation (IPV) facility
- 8-position sample changer as standard
- Rapid System Operation



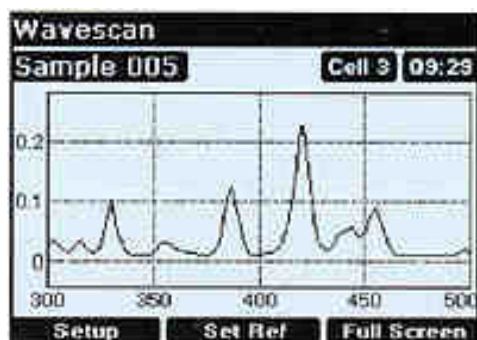
Libra S22

Specification		
Model	Libra S21	Libra S22
Light Source	Xenon (PTR)	
Optics	Reference beam compensation (RBC)	
Bandwidth	3nm or better	
Wavelength Range	325 - 1100nm	190 - 1100nm
Wavelength Accuracy	+/-1nm	
Absorbance Range	-3.000 to +3.000A	
Dimensions	510 x 350 x 160mm	
Power	90 - 265 V AC, 50/60Hz	

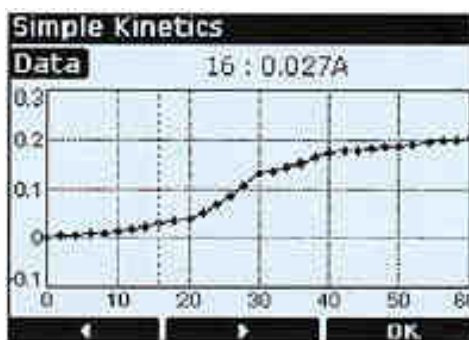
Libra S21 and S22 are simple-to-use instruments with advanced performance, incorporating xenon lamp technology for longer source lifetime and lower maintenance costs. A further benefit of this design is optical noise compensation to improve signal to background measurements. Instrument Performance Validation (IPV) is included as standard, and will benefit any laboratory that needs to prove the quality of their results; the GLP results can be viewed on the display or printed out.

In addition to measuring absorbance, transmittance and concentration, they provide a standard curve routine for analyte determination. Wavelength scan (with zoom), absorbance changes with time, reaction rate determinations and standard curves can be displayed as graphics and printed out. User defined equations can be entered using multi-wavelength mode and up to 18 methods can be saved in separate operator folders. The instrument can be upgraded for more sophisticated applications, as well as data manipulation, with Acquire Software and a PC.

With its large sample compartment and wide range of accessories, Libra S21 and S22 are versatile and reliable instruments for use in any laboratory performing general-purpose measurements.



Wavelength Scan



Kinetics



Biochrom Ltd
Certificate No. B90333



香港科學儀器社有限公司
Che Scientific Co. (Hong Kong) Ltd.

Hong Kong Head office:

Unit D, 18/F, Roxy Industrial Centre, 58-66 Tai Lin Pai Road, Kwai Chung, Hong Kong

TEL: (852) 2481 1323 FAX: (852) 2418 1302

E-mail: sales@chescientific.com Website: www.chescientific.com



浙江科通儀器有限公司
Zhejiang Fortune Scientific Co. Ltd.

TEL: (86 571) 8729 7500 FAX: (86 571) 8729 7511

E-mail: sales@fortunescientific.com.cn

Website: www.fortunescientific.com.cn

Guangzhou Branch:

TEL: (86 20) 8130 7388 FAX: (86 20) 8108 4925

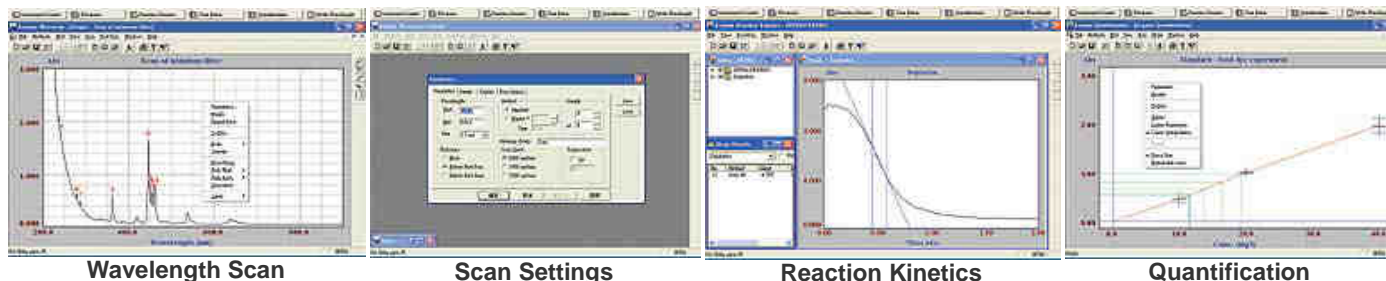
E-mail: guangzhou@fortunescientific.com.cn

Acquire and Acquire Lite Software for PC

- Comprehensive software for UV/Visible Spectrophotometers
- Audit trail (data log) facility in all modes of operation Flexible results formatting and presentation
- Extensive on-line help
- Export to spreadsheet capabilities
- Support Microsoft Windows 95, 98, Me, NT, 2000, XP

Application modules and selected features:	
Instrument Control	Simulates instrument control panel
Wavelength Scanning	Zoom, 1-4 derivative, Overlay, Mathematics, Peak Search
Reaction Kinetics	Serial and parallel assays, multi wavelength assays, Michaelis Menten
Quantification	Standard curve, Substrate concentration, curve fit, load by record, append
Multi Wavelength	User defined equation entry
Time Drive	Long term measurements with automatic save, multi wavelength

Specification		
Software	Use with	Application Modules Included
Acquire	Libra S21, Libra S22, Libra S32, Libra S32PC	1) Instrument Control 2) Wavelength scanning 3) Reaction Kinetics 4) Quantification 5) Multi-Wavelength 6) Time Drive
Acquire Lite	Libra S21, Libra S22	1) Instrument Control 2) Wavelength scanning 3) Reaction Kinetics 4) Quantification



Optional Accessories

For Libra S21, S22, S32, S32PC		
1	4 position cell changer, 10 - 50mm pathlength	80-2160-01
2	6 position Peltier heated cell changer	80-2106-04
3	Temperature control unit (use with item 3)	80-2112-49
4	8 position cell changer	80-2108-01
5	Single cell holder, 10mm pathlength	80-2106-05
6	Cylindrical cell holder, up to 100mm pathlength	80-2106-10
7	Cell holder with 8ul HPLC flow cell	80-2106-11
8	Peltier heated single cell holder, 20-50°C	80-2106-13
9	Sipper, complete with flow cell and all tubing (use with item 5 or item 8)	80-2112-25
10	Autosampler interface fit for Gilson 211/222XI	80-2104-96



For Libra S11, S12F		
1	2 position manual cell changer	80-2109-04
2	50mm pathlength cell holder	80-2109-05
3	Test tube holder, 8-6 mm dia., 180mm length	80-2109-33
4	Peltier heated cell holder, 25, 30, 37°C	80-2109-07
5	Temperature controller (use with item 4)	80-2112-54
6	Cylindrical Controller	80-2112-26



Hong Kong Head office:

Unit D, 18/F, Roxy Industrial Centre, 58-66 Tai Lin Pai Road, Kwai Chung, Hong Kong

TEL: (852) 2481 1323 FAX: (852) 2418 1302

E-mail: sales@chescientific.com Website: www.chescientific.com

TEL: (86 571) 8729 7500 FAX: (86 571) 8729 7511

E-mail: sales@fortunescientific.com.cn

Website: www.fortunescientific.com.cn

Guangzhou Branch:

TEL: (86 20) 8130 7388 FAX: (86 20) 8108 4925

E-mail: guangzhou@fortunescientific.com.cn